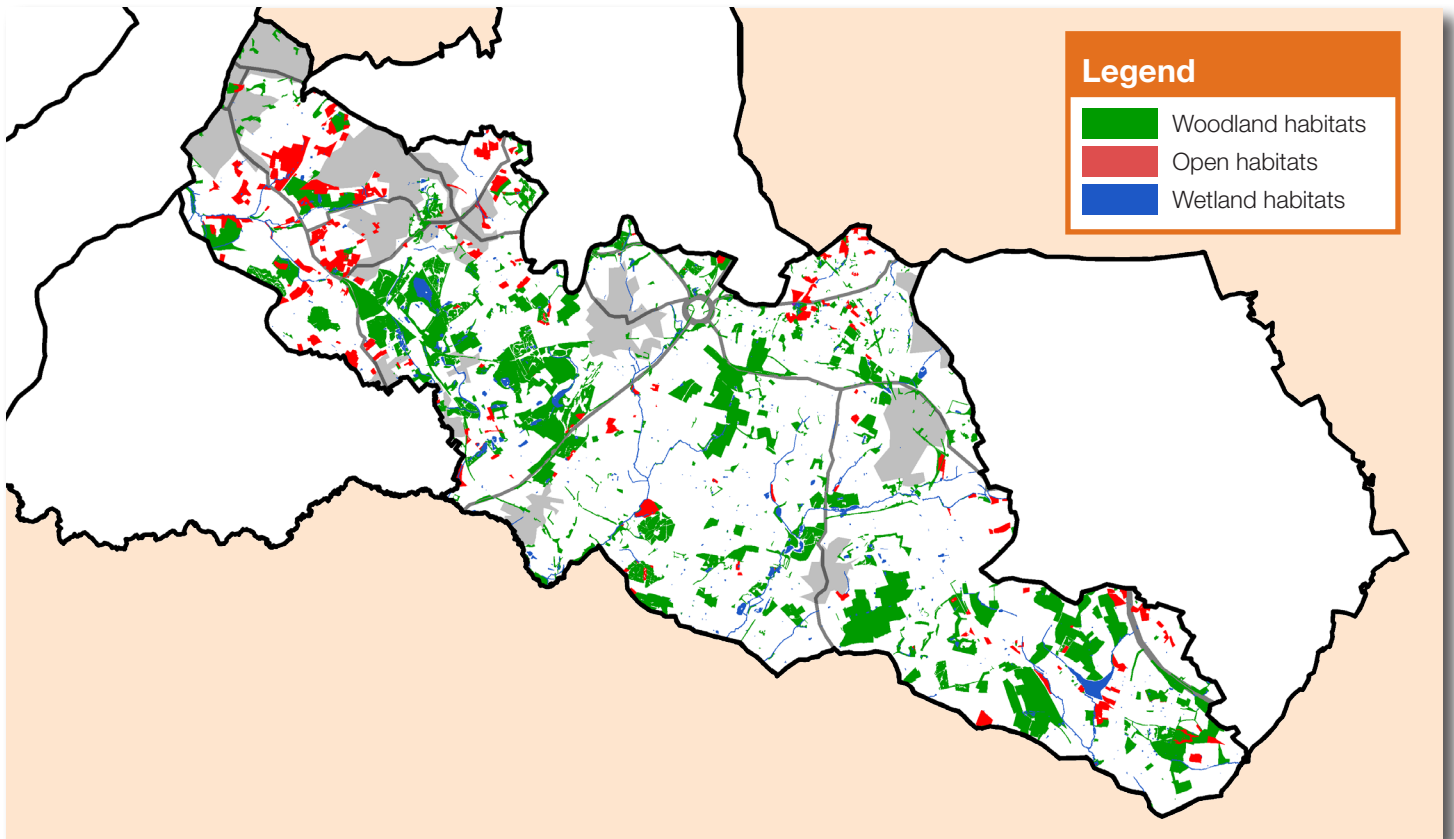


# Leicestershire & South Derbyshire Coalfield

Area: 18,869ha

Proportion of National Forest: 38%



## Landscape character

The Coalfield is dominated by former mining activity, which has imprinted a strong industrial character upon the landscape. Coal mining and clay working created a legacy of spoil heaps and derelict land, with sites around built-up areas and in the open countryside. Many of these post-industrial sites have been restored to woodland and other habitats.

The landscape is open and rolling, with agricultural land woven between the industrial and urban fabric. While it was generally unwooded, the last 15 years has seen a transformation of the landscape with new Forest sites creating a mosaic of woodlands, open habitats and wetlands. However, farming is still a dominant feature of the landscape with many gappy, hedged fields.

Settlement is typified by straggling towns and villages, and brick-built terraced miners' cottages are often a feature of skyline views.



## Priority Habitats & Species

| Woodland habitats  | Open habitats   | Wetland habitats  | Species   |
|--|---|---|---|
| <ul style="list-style-type: none"> <li>Plantation woodland</li> <li>Wet woodland</li> <li>Traditional orchards</li> <li>Scrub</li> </ul> | <ul style="list-style-type: none"> <li>Acid grassland</li> <li>Neutral grassland</li> <li>Rough grassland</li> <li>Hedgerows</li> <li>Arable field margins</li> </ul> | <ul style="list-style-type: none"> <li>Standing waters</li> <li>Reedbeds</li> </ul> | <ul style="list-style-type: none"> <li>Barn owl</li> <li>Otter</li> <li>Ruddy darter</li> <li>Bats</li> <li>L woodpecker</li> <li>Water vole</li> </ul> |

## Local Targets

### Woodland habitats

- Plant at least 145ha of new woodland by 2015.
- Bring 10ha of mature woodland sites into management by 2015.
- Increase the area of wet woodland by 2ha by 2015.
- Establish 1 new orchard by 2015.
- Bring 1 traditional orchard into management by 2015.

### Open habitats

- Increase extent of lowland acid grassland by 3ha by 2015.
- To increase the area of species-rich neutral grassland by 45ha by 2015 through appropriate management and habitat re-creation.
- Create 1ha of wet grassland by 2015.
- Restore management on at least 5ha of floodplain grazing marsh by 2015 on areas with suitable soils and conditions.
- Plant 6km of new hedgerow by 2015.
- Restore 45km of hedgerow by 2015 (by laying/coppicing/gapping up).
- Establish 2-6m margins on 4 farms by the year 2015.

### Wetland habitats

- Create 10 small ponds by 2015.
- Restore 15 water bodies by 2015.
- Create 1ha of new reedbed by 2015.

## Species Objectives

### Barn owls

- Increase the breeding population of barn owls in the area.
- Continue to expand the network of barn owl nest boxes across the area.

### Bats

- Maintain existing bat populations and increase the distribution of bats to all suitable habitats.
- Erect bat boxes at suitable locations.

### Otters

- Expand the provision of suitable otter habitat along watercourses in the area.

### Lesser spotted woodpecker

- Increase the provision of lesser spotted woodpecker habitat in the area.

### Ruddy darter

- Increase the number of ruddy darter breeding sites in the area.

### Water vole

- Expand the provision of suitable water vole habitat along watercourses in the area.

For further information, contact:

**The National Forest Company**

Bath Yard, Moira, Swadlincote, Derbyshire DE12 6BA  
01283 551211 enquiries@nationalforest.org



**THE NATIONAL  
FOREST**