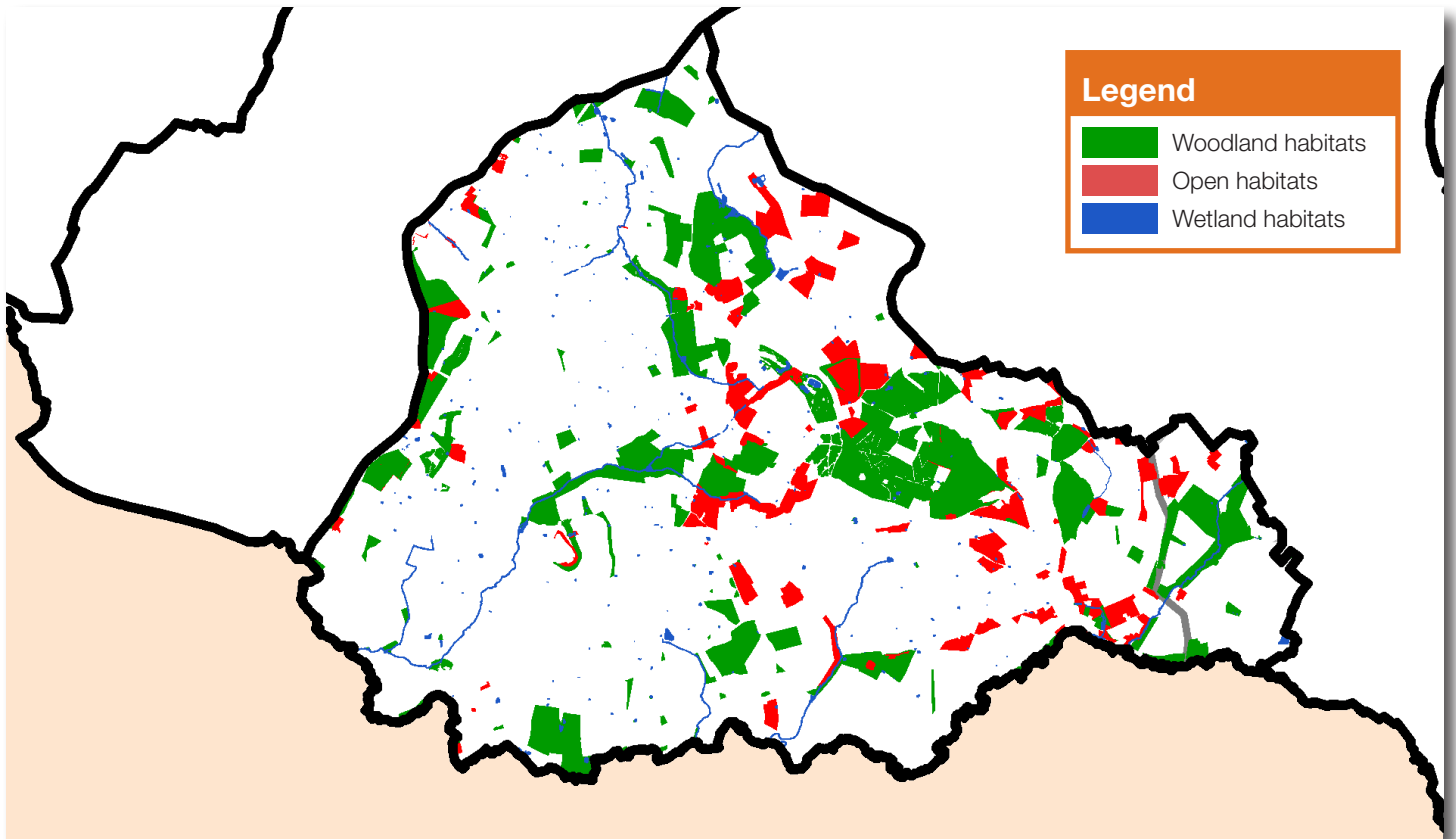


Mease & Sence Lowlands

Area: 5,892ha

Proportion of National Forest: 12%



Landscape character

The Mease and Sence Lowlands is a rolling, well-ordered agricultural landscape which is characterised by large cropped fields, intact hedgerow patterns, the influence of country estates and a scattering of game coverts.

Originally one of the least wooded parts of The National Forest, this area contains many good examples of neutral grasslands. These are now being joined by new woodlands, many of which form part of larger woodland blocks around places such as Grangewood and Rosliston.

Tall church spires are an eye-catching feature. Pinpointing several small villages, they can often be seen poking above developing woodlands and copses. These villages are linked by a network of narrow rural lanes, often with wide grass verges.



Priority Habitats & Species

Woodland habitats	Open habitats	Wetland habitats	Species	
Plantation woodland Wet woodland Scrub	Neutral grassland Wet grassland & marsh Rough grassland Hedgerows Arable field margins	Standing waters Linear waters Reedbeds	Barn owl Black poplar Otter Water vole	Bats L woodpecker Ruddy darter

Local Targets

Woodland habitats

- Bring 3ha of mature woodland sites into management by 2015.
- Plant at least 45ha of new woodland by 2015.
- Increase the area of wet woodland by 2ha by 2015.

Open habitats

- To increase the area of species-rich neutral grassland by 15ha by 2015 through appropriate management and habitat re-creation.
- Create 1ha of wet grassland by 2015.
- Restore management on at least 5ha of floodplain grazing marsh by 2015 on areas with suitable soils and conditions.
- Plant 3km of new hedgerow by 2015.
- Restore 15km of hedgerow by 2015 (by laying/coppicing/gapping up).
- Establish 2-6m margins on 2 farms by the year 2015.

Wetland habitats

- Initiate 2 river corridor restoration projects by 2015.
- Create 10 small ponds by 2015.
- Restore 15 water bodies by 2015.
- Create 1ha of new reedbed by 2015.

Species Objectives

Barn owls

- Increase the breeding population of barn owls in the area.
- Continue to expand the network of barn owl nest boxes across the area.

Bats

- Maintain existing bat populations and increase the distribution of bats to all suitable habitats.
- Erect bat boxes at suitable locations.

Black poplar

- Increase the number of black poplars in appropriate locations within the area.

Lesser spotted woodpecker

- Increase the provision of lesser spotted woodpecker habitat in the area.

Otters

- Expand the provision of suitable otter habitat along watercourses in the area.

Ruddy darter

- Increase the number of ruddy darter breeding sites in the area.

Water vole

- Expand the provision of suitable water vole habitat along watercourses in the area.

For further information, contact:

The National Forest Company

Bath Yard, Moira, Swadlincote, Derbyshire DE12 6BA
01283 551211 enquiries@nationalforest.org



THE NATIONAL
FOREST