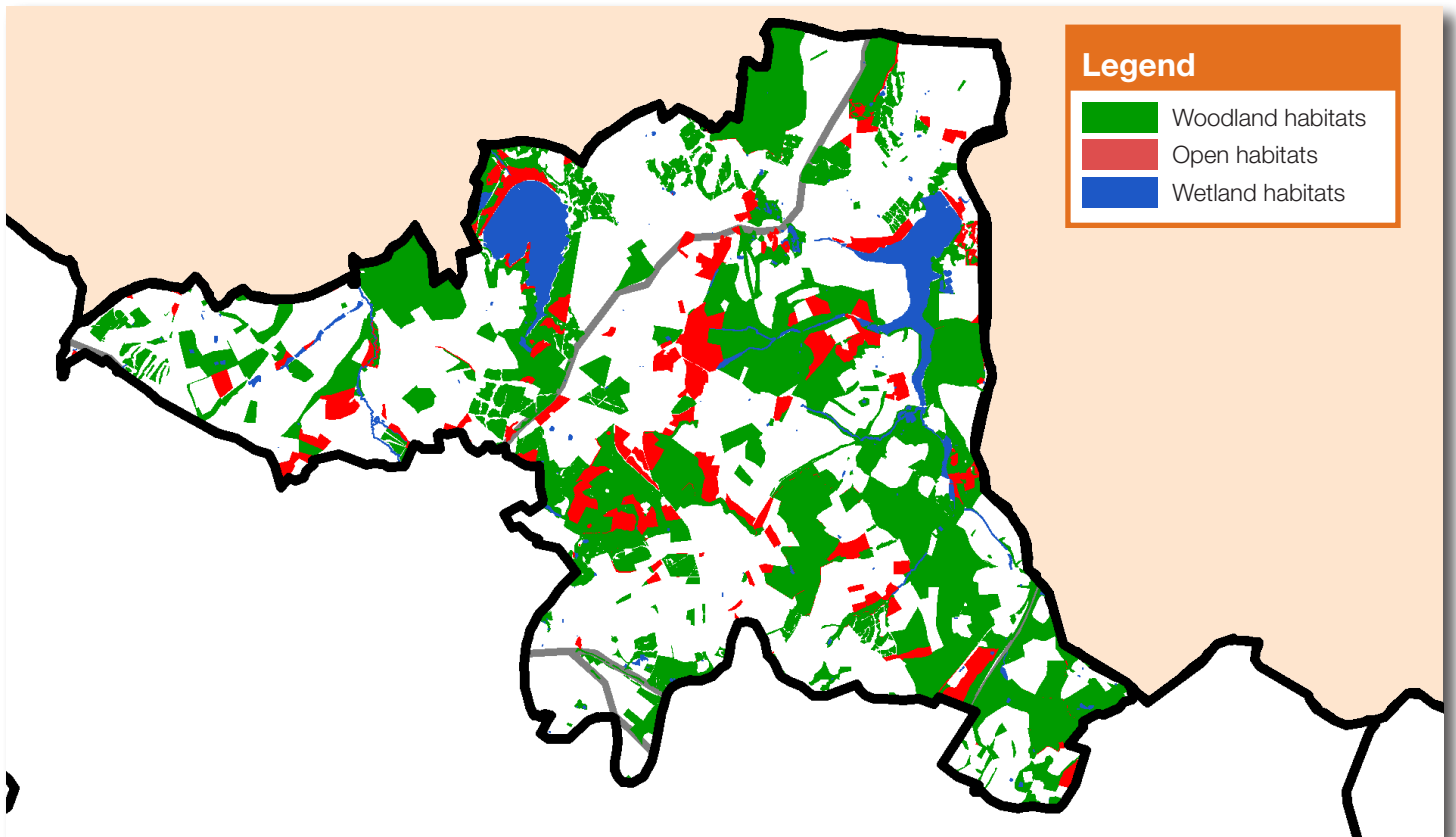


Melbourne Parklands

Area: 5,294ha

Proportion of National Forest: 11%



Landscape character

The Melbourne Parklands landscape area has a strong rural character, with an undulating, upland feel offering plateau-top views across the Trent Valley. It includes large parklands and wooded country estates together with extensive reservoirs at Foremark and Staunton Harold.

Mixed farmland surrounds the parklands, with a pattern of hedged fields and scattered hedgerow trees. The plateau-top is dominated by large arable fields and is sparsely wooded, with a fragmented hedgerow pattern.

The woodlands in this area are relatively well-linked, with large blocks linked to the National Trust's Calke estate and the nearby Staunton Harold estate.

Brick and sandstone vernacular buildings are a feature of the villages.



Priority Habitats & Species

Woodland habitats	Open habitats	Wetland habitats	Species
<ul style="list-style-type: none"> Ancient woodlands Plantation woodland Wood pasture Traditional orchards Scrub 	<ul style="list-style-type: none"> Acid grassland Neutral grassland Heath grassland Rough grassland Hedgerows Arable field margins 	<ul style="list-style-type: none"> Standing waters 	<ul style="list-style-type: none"> Barn owl Bluebell Ruddy darter Bats L woodpecker Water vole

Local Targets

Woodland habitats

- Extend ancient semi-natural woodland on 1 site by 2015 by natural regeneration.
- Bring 7ha of mature woodland into management by 2015.
- Plant at least 40ha of new woodland by 2015.
- Restore/bring back into management a total of 40ha of wood pasture/parkland by 2015.
- Establish 2 new orchards by 2015.
- Bring 2 traditional orchards into management by 2015.

Open habitats

- Increase extent of lowland acid grassland by 2ha by 2015.
- To increase the area of species-rich neutral grassland by 10ha by 2015 through appropriate management and habitat re-creation.
- Increase the extent of heath grassland, through restoration and re-creation by a further 1ha by 2015.
- Plant 2km of new hedgerow by 2015.
- Restore 15km of hedgerow by 2015 (by laying/coppicing/gapping up).
- Establish 2-6m margins on 1 farm by the year 2015.

Wetland habitats

- Create 5 small ponds by 2015.
- Restore 9 water bodies by 2015.

Species Objectives

Barn owls

- Increase the breeding population of barn owls in the area.
- Continue to expand the network of barn owl nest boxes across the area.

Bats

- Maintain existing bat populations and increase the distribution of bats to all suitable habitats.
- Erect bat boxes at suitable locations.

Bluebells

- Include bluebells in new woodlands.
- Bring woodlands with existing bluebell populations into management.

Lesser spotted woodpecker

- Increase the provision of lesser spotted woodpecker habitat in the area.

Ruddy darter

- Increase the number of ruddy darter breeding sites in the area.

Water vole

- Expand the provision of suitable water vole habitat along watercourses in the area.

For further information, contact:

The National Forest Company

Bath Yard, Moira, Swadlincote, Derbyshire DE12 6BA
01283 551211 enquiries@nationalforest.org



**THE NATIONAL
FOREST**