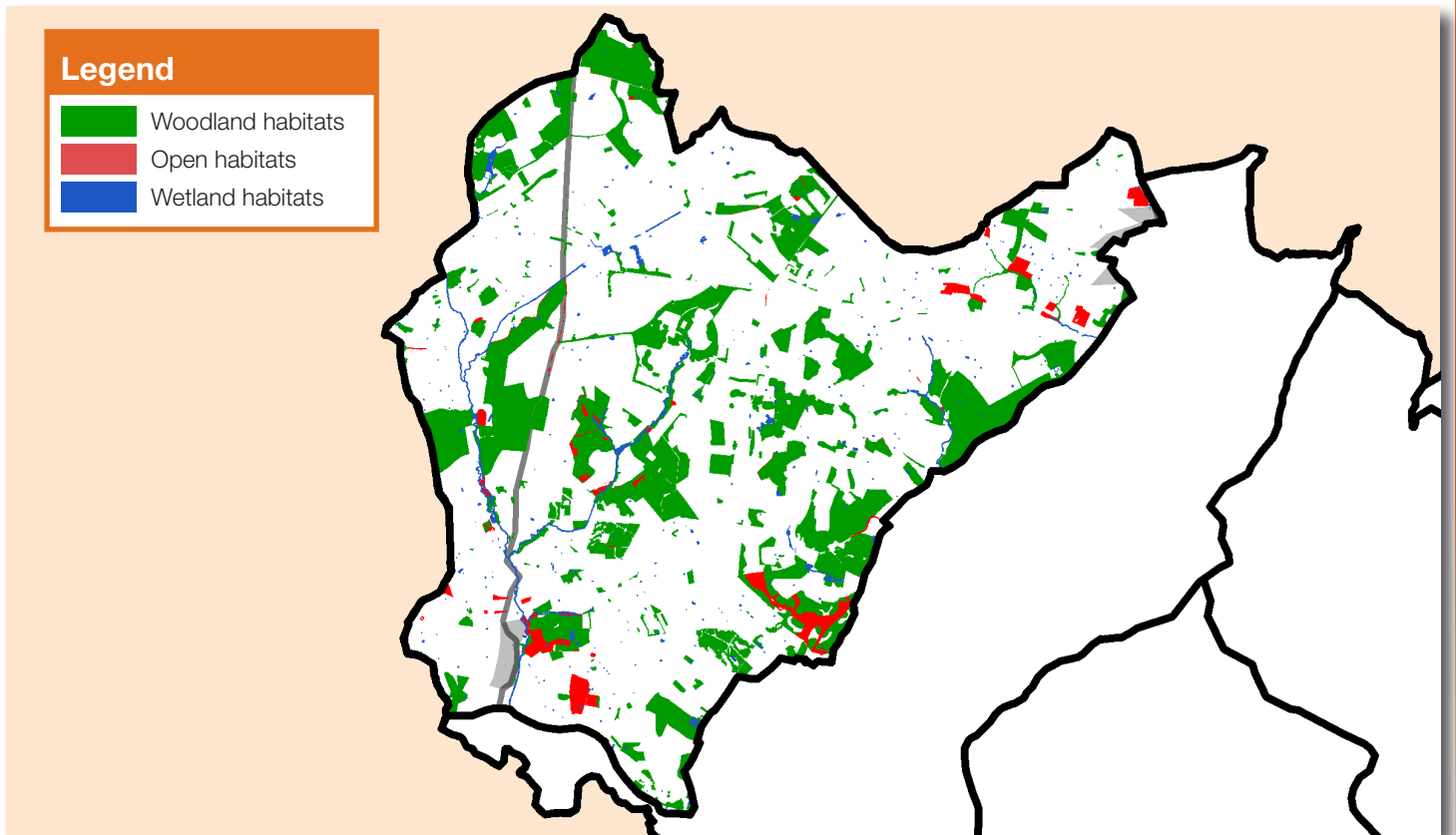


Needwood & South Derbyshire Claylands

Area: 6,927ha

Proportion of National Forest: 14%



Landscape Character

This is a historic well-wooded landscape with many ancient woodlands, hedgerow trees, designed parklands and a pattern of hedged fields. It is an area of mixed farmland but retains a strong pastoral character. A number of large estates form core of the Needwood area and are the focus for wood pasture and neutral grassland. Field ponds are a common feature of the pasture lands.

Although large woodlands, such as the blocks around Jacksons Bank, are a prominent feature of the area, much of the woodland in Needwood consists of smaller, fragmented remnants. These are often in the form of copses in field corners or along watercourses.

Small, isolated blocks of acid grassland can be found here, but the predominant habitats are more neutral in character.



Priority Habitats & Species

Woodland habitats	Open habitats	Wetland habitats	Species
<ul style="list-style-type: none"> Ancient woodlands Plantation woodland Wood pasture Traditional orchards Scrub 	<ul style="list-style-type: none"> Neutral grassland Rough grassland Hedgerows Field margins 	<ul style="list-style-type: none"> Standing waters 	<ul style="list-style-type: none"> Barn owl Bluebell Ruddy darter Bats L woodpecker Water vole

Local Targets

Woodland habitats

- Extend ancient semi-natural woodland on 2 sites by 2015 by natural regeneration.
- Bring 7ha of mature woodland into management by 2015.
- Plant at least 50ha of new woodland by 2015.
- Restore/bring back into management a total of 30ha of wood pasture/parkland by 2015.
- Establish 1 new orchard by 2015.
- Bring 1 traditional orchard into management by 2015.

Open habitats

- Increase the area of species-rich neutral grassland by 10ha by 2015 through appropriate management and habitat re-creation.
- Plant 3km of new hedgerow by 2015.
- Restore 18km of hedgerow by 2015 (by laying/coppicing/gapping up).
- Establish 2-6m margins on 1 farm by 2015.

Wetland habitats

- Create 5 ponds by 2015.
- Restore 8 waterbodies by 2015.

Species Objectives

Barn owls

- Increase the breeding population of barn owls in the area.
- Continue to expand the network of barn owl nest boxes across the area.

Bats

- Maintain existing bat populations and increase the distribution of bats to all suitable habitats within the area.
- Erect bat boxes at suitable locations.

Bluebells

- Include bluebells in new woodlands.
- Bring woodlands with existing bluebell populations into management.

Lesser spotted woodpecker

- Increase the provision of lesser spotted woodpecker habitat in the area.

Ruddy darter

- Increase the number of ruddy darter breeding sites in the area.

Water vole

- Expand the provision of suitable water vole habitat along watercourses in the area.

For further information, contact:

The National Forest Company

Bath Yard, Moira, Swadlincote, Derbyshire DE12 6BA
01283 551211 enquiries@nationalforest.org



**THE NATIONAL
FOREST**