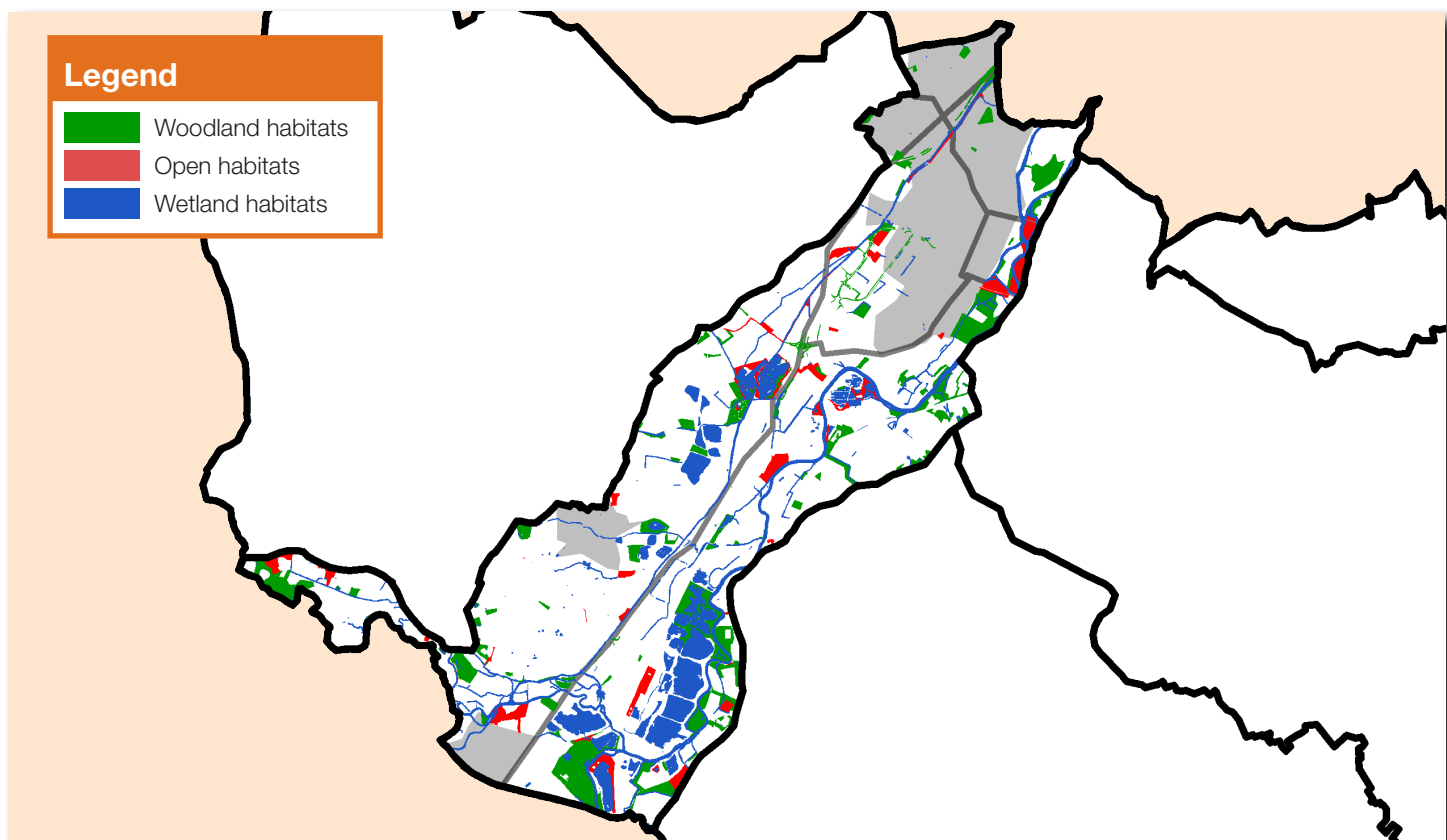


# Trent Valley Washlands

Area: 4,963ha

Proportion of National Forest: 10%



## Legend

- Woodland habitats
- Open habitats
- Wetland habitats

## Landscape character

The Trent Valley is marked by an extensive flat floodplain formed by broad, slowly meandering rivers. It is dominated by industrial and urban influences, with widespread sand and gravel extraction. The valley is a major transport corridor, with the A38 dual-carriageway, the east coast mainline railway and the Trent & Mersey Canal all running parallel to the Trent. As a result, ribbon development of commercial and industrial units is a prominent feature along this corridor.

There are many large, open-cropped fields, plus remnant pastures and water meadows. The Trent valley is generally unwooded with, in places, a scrubby character of gappy, overgrown hedges and thickets of shrubs fringing pools reclaimed from gravel workings.

A legacy of sand and gravel extraction is the presence of a number of large, open waterbodies. Many of these are managed for wildlife.



## Priority Habitats & Species

Woodland habitats	Open habitats	Wetland habitats	Species	
Plantation woodland Wet woodland Traditional orchards Scrub	Neutral grassland Wet grassland & marsh Rough grassland Hedgerows Arable field margins	Standing waters Linear waters Reedbeds	Barn owl Black poplar Otter Water vole	Bats L woodpecker Ruddy darter

## Local Targets

### Woodland habitats

- Bring 3ha of mature woodland sites into management by 2015.
- Plant at least 35ha of new woodland by 2015.
- Increase the area of wet woodland by 6ha by 2015.

### Open habitats

- Increase the area of species-rich neutral grassland by 5ha by 2015 through appropriate management and habitat re-creation.
- Create 8ha of wet grassland by 2015.
- Restore management on at least 20ha of floodplain grazing marsh by 2015 on areas with suitable soils and conditions.
- Plant 2km of new hedgerow by 2015.
- Restore 12km of hedgerow by 2015 (by laying/coppicing/gapping up).
- Establish 2-6m margins on 1 farm by the year 2015.

### Wetland habitats

- Initiate 3 river corridor restoration projects by 2015.
- Create 15 small ponds by 2015.
- Restore 20 water bodies by 2015.
- Create 3ha of new reedbed by 2015.

## Species Objectives

### Barn owls

- Increase the breeding population of barn owls in the area.
- Continue to expand the network of barn owl nest boxes across the area.

### Bats

- Maintain existing bat populations and increase the distribution of bats to all suitable habitats.
- Erect bat boxes at suitable locations.

### Black poplar

- Increase the number of black poplars in appropriate locations within the area.

### Lesser spotted woodpecker

- Increase the provision of lesser spotted woodpecker habitat in the area.

### Otters

- Expand the provision of suitable otter habitat along watercourses in the area.

### Ruddy darter

- Increase the number of ruddy darter breeding sites in the area.

### Water vole

- Expand the provision of suitable water vole habitat along watercourses in the area.

For further information, contact:

**The National Forest Company**

Bath Yard, Moira, Swadlincote, Derbyshire DE12 6BA  
01283 551211 enquiries@nationalforest.org



**THE NATIONAL  
FOREST**