

# 16 Access and Mobility



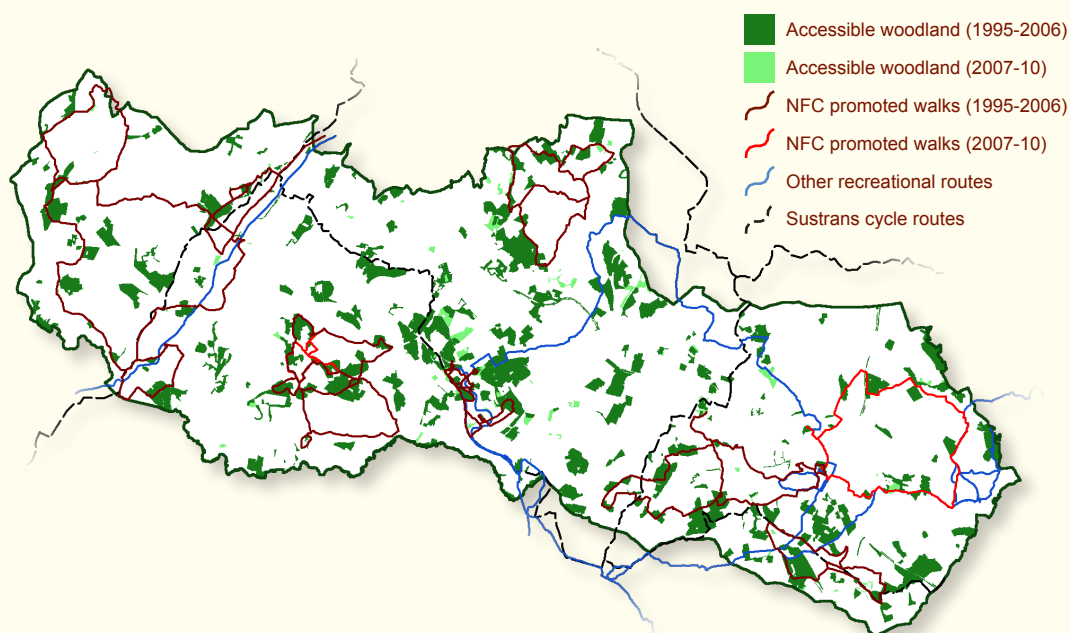
F

So

A high priority is to create a welcoming and accessible recreation resource for local residents (200,000 people) and visitors to the area (10 million people are within one hour's travel). This indicator measures accessibility to green space and mobility to recreation and visitor attractions. (See also Environmental Equality indicator).

- Of all new woodlands created between 1990 and 2010, 81% (4,738ha out of 6,230ha) have some form of public access and a further 6% (391ha) have access planned<sup>1</sup>. These percentages are in line with the 2007 baseline.
- From 1995 to 2010, 559km of Forest trails have been created. These include new routes and promoted trails on rights of way – with provision for walkers, cyclists, horse riders and disabled people. Since 2007, 70km of new routes have been created including the Conkers Circuit and nine geological walks in Charnwood Forest<sup>1</sup>.
- The overall net public value of The National Forest recreational resource is currently estimated at £186 million<sup>2</sup>.

## Accessible woodlands and recreational routes 2010



- Accessible woodlands are promoted on the National Forest Ordnance Survey map (Explorer 245) and on the National Forest Company's website. The website also promotes over 60 walks, more than 40 horse riding sites and 8 all abilities sites<sup>1</sup>.
- 183 accessible woodlands (with a total area of 4,777ha) are within 500m of a bus route<sup>3</sup>.

### \* ACTION:

- 1) Continue to create new recreational access and maintain existing access to the Forest area.
- 2) Continue to promote public access opportunities to residents and visitors.
- 3) Monitor activity annually.

### DATA SOURCES:

- 1) NFC annual monitoring [2010].
- 2) Initial assessment of the costs and benefits of The National Forest – Efec [2010]
- 3) NFC research [2010], based upon general measures for bus service accessibility promoted by Arriva buses, Leicestershire County Council and Staffordshire County Council.

CSC