

17 Environmental Equality



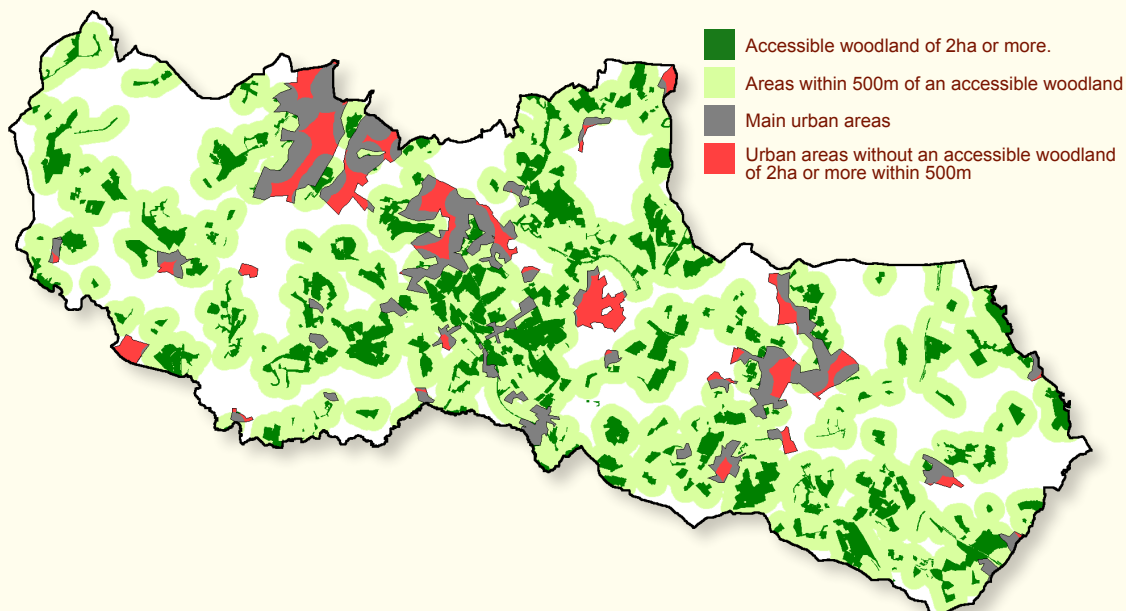
F

So

The National Forest is contributing directly to environmental equality through creating new accessible green space close to where people live. This provides health and well-being benefits through increased physical activity, adds to recreation and biodiversity opportunities and improves quality of life.

- Using the Woodland Trust's Woodland Access Standards¹, in 2010 approximately 66.3% of The National Forest's 200,000 residents live within 500m of an accessible woodland of 2ha or more in size²; an increase of 3 percentage points since 2007. This compares with 14.5% of the population for England (10.2% in 2004)¹.
- All of the Forest's population live within 4km of an accessible woodland of at least 20ha², compared with 63% for England (55.2% in 2004)¹.

Proximity to accessible woodland 2010²



- The NFC is currently collating information from local authorities on accessible urban greenspace for possible future comparison with Natural England's standards³. The data is currently not in a common format and is assessed differently by individual local authorities.

* ACTION:

- 1) Create new accessible green space through the Forest's creation.
- 2) Monitor green space standards every 3-5 years.

DATA SOURCES:

- 1) The Woodland Trust [2010] Space for People: Targeting action for woodland access.
From: www.woodlandtrust.org.uk/publications
- 2) NFC research applying the Woodland Trust's woodland access standards – Woodland Trust [2010].
- 3) Natural England Standards for Accessible Natural Greenspace [2010].
From: www.naturalengland.org.uk

CSC

NRP