

The National Forest Way takes walkers on a 75-mile journey through a transforming landscape, from the National Memorial Arboretum in Staffordshire to Beacon Hill Country Park in Leicestershire.

On the way, you will discover the area's evolution from a rural landscape, through industrialisation and its decline, to the modern-day creation of a new forest, where 21st-century life is threaded through a mosaic of green spaces and settlements.

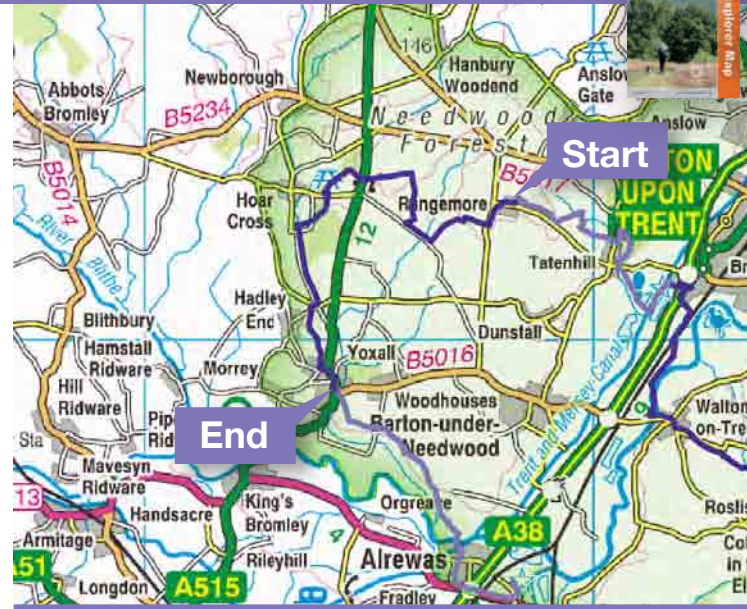
The trail leads through young and ancient woodlands, market towns and the industrial heritage of this changing landscape.



The National Forest Way was created by a partnership of the National Forest Company, Derbyshire County Council, Leicestershire County Council and Staffordshire County Council, with the generous support of Fisher German.



To find out more, visit:  
[www.nationalforestway.co.uk](http://www.nationalforestway.co.uk)



## Stage 11: Rangemore to Yoxall

Length: 7½ miles / 12 kilometres

### About this stage

**Start:** Rangemore (DE13 9RW)  
**End:** Yoxall (DE13 8NQ)

This stage takes you through the heart of Needwood Forest, former hunting grounds from the 13th century. This well-wooded landscape is threaded by a network of wide straight roads, the original "rides" through the ancient forest. It is a sparsely populated area with a number of stately homes with large estates.

### The National Forest Company

Bath Yard, Moira, Swadlincote,  
Derbyshire DE12 6BA

Telephone: 01283 551211

Enquiries: [www.nationalforestway.co.uk/contact](http://www.nationalforestway.co.uk/contact)

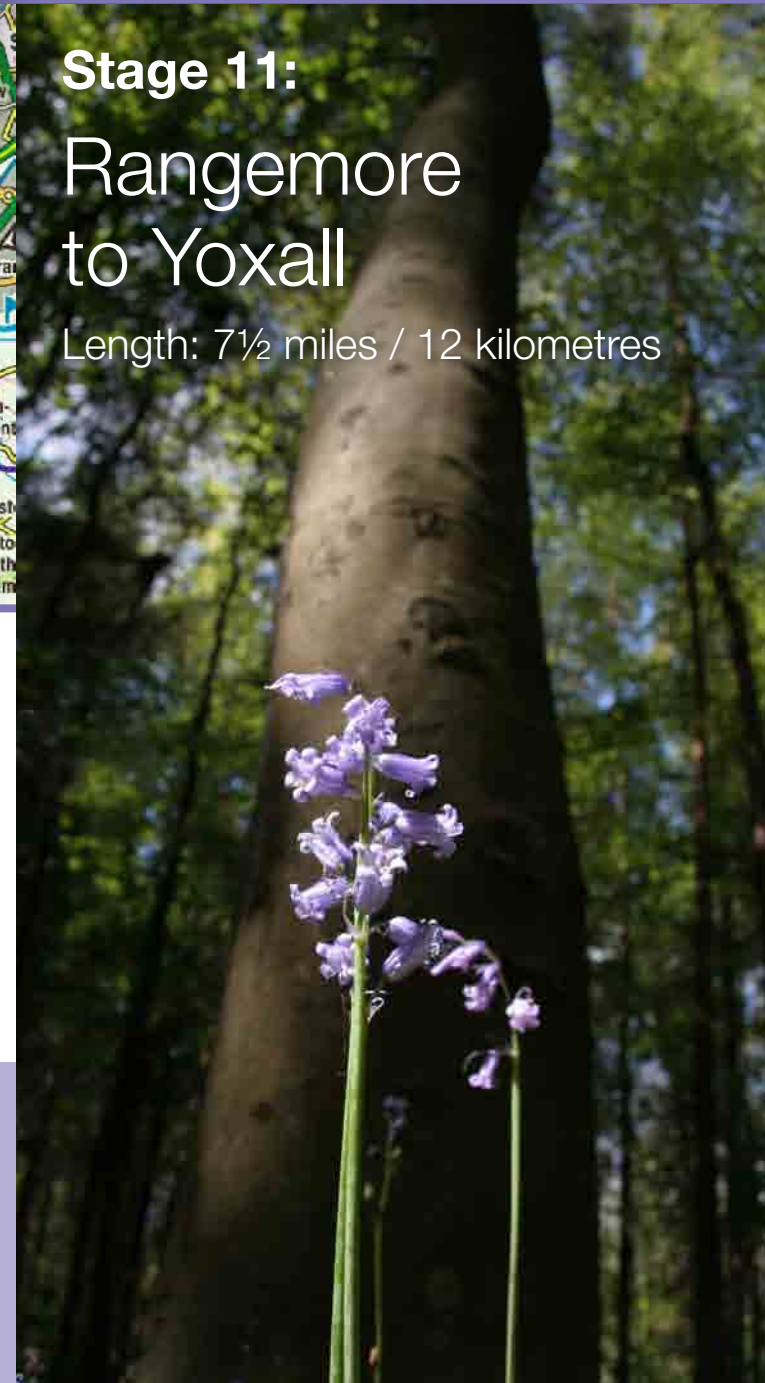
Website: [www.nationalforest.org](http://www.nationalforest.org)

Photos: Christopher Beech, Martin Vaughan,  
Lesley Hextall and Jacqui Rock

Maps reproduced by permission of Ordnance Survey on behalf of HMSO. © Crown copyright and database right (2014). All rights reserved. Licence number 100021056.



Route directions: Westbound



# Rangemore to Yoxall

**1** Leave the car park and turn right along Tatenhill Lane. After about 100m, turn left onto the footpath just after All Saints' Church.

**2** When the path forks, turn right off the main path onto a smaller one. Cross the next stile and bear left across the field, keeping to the right of the small copse of trees in the middle of the field. In the corner of the field, cross a stile and then turn left to follow the road, with care, for about 350m.

**3** When you reach the driveway take the turn for Linthurst Farm on your right. Follow the drive, ignoring the permissive bridleway on your left. Walk just to the left of a row of garages towards a stile and go past the house on your left. Cross the stile, and walk diagonally left across the field towards the next stile.

**4** Cross over this stile and then follow the footpath along the left-hand side of the next field, keeping close to the hedge. The path then joins a track which you continue to follow until you reach the road at the end.

**5** Turn right to follow the road for about 700m as it goes downhill and then back up again.

**6** Turn right onto the next footpath (about 200m beyond the entrance to Lower Linbrook Farm). Cross the stile and head for another stile at the opposite side of the field. Head left after crossing the stile, to cut diagonally across the field to another stile. Cross the stile and walk straight on, keeping the hedgerow on your right. Carry on through the next gateway until you reach a stile in the corner of the field.

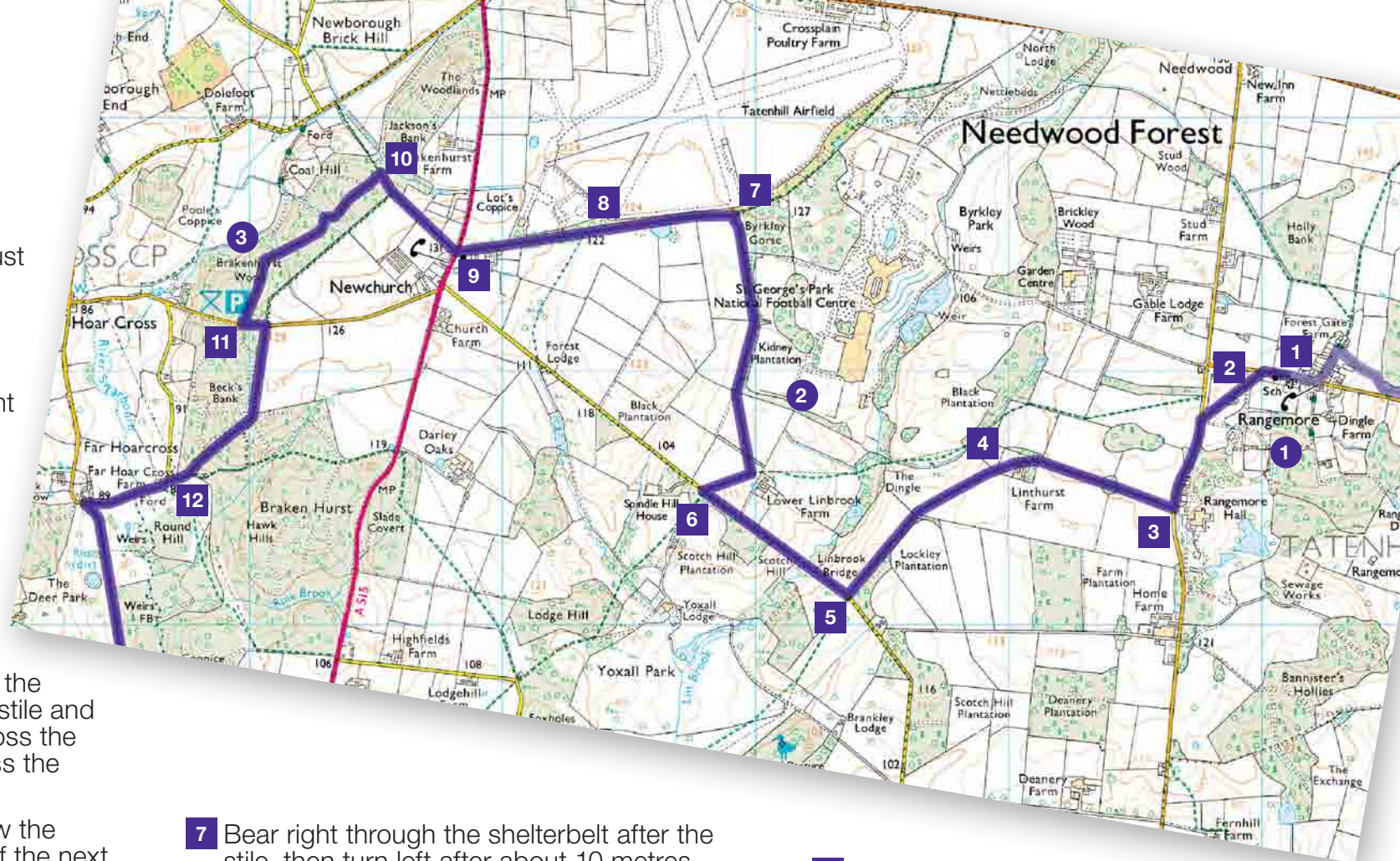
**7** Bear right through the shelterbelt after the stile, then turn left after about 10 metres to walk along a path. There will be a small airfield on your right, and there may be small aircraft taking off and landing as you walk.

**8** Keep following this path alongside the airfield for about 1,000m as it crosses two concrete aprons and another track. You will eventually reach the road at Newchurch.

**9** Cross the road, and bear slightly left to go into the field on the path opposite. Walk along the edge of the field with the hedge on your right for about 300m. Head through the kissing gate, follow the path for about 15m and then turn left onto the path by the tree with the waymarker on it.

**10** Follow the path as it winds its way through the woodland until you reach a picnic area on your right. From here, continue on through the car park to the road.

**11** Turn left onto the road and walk for about 75m, when you should see a footpath on your right. Take this footpath and head through the gap to follow the path along the side of the field next to the wood. At the end of the field, go through the gateway, then bear right to follow the footpath downhill through the woods. As the woods come to an end, turn right along the clear forest track and follow it until it reaches a road.

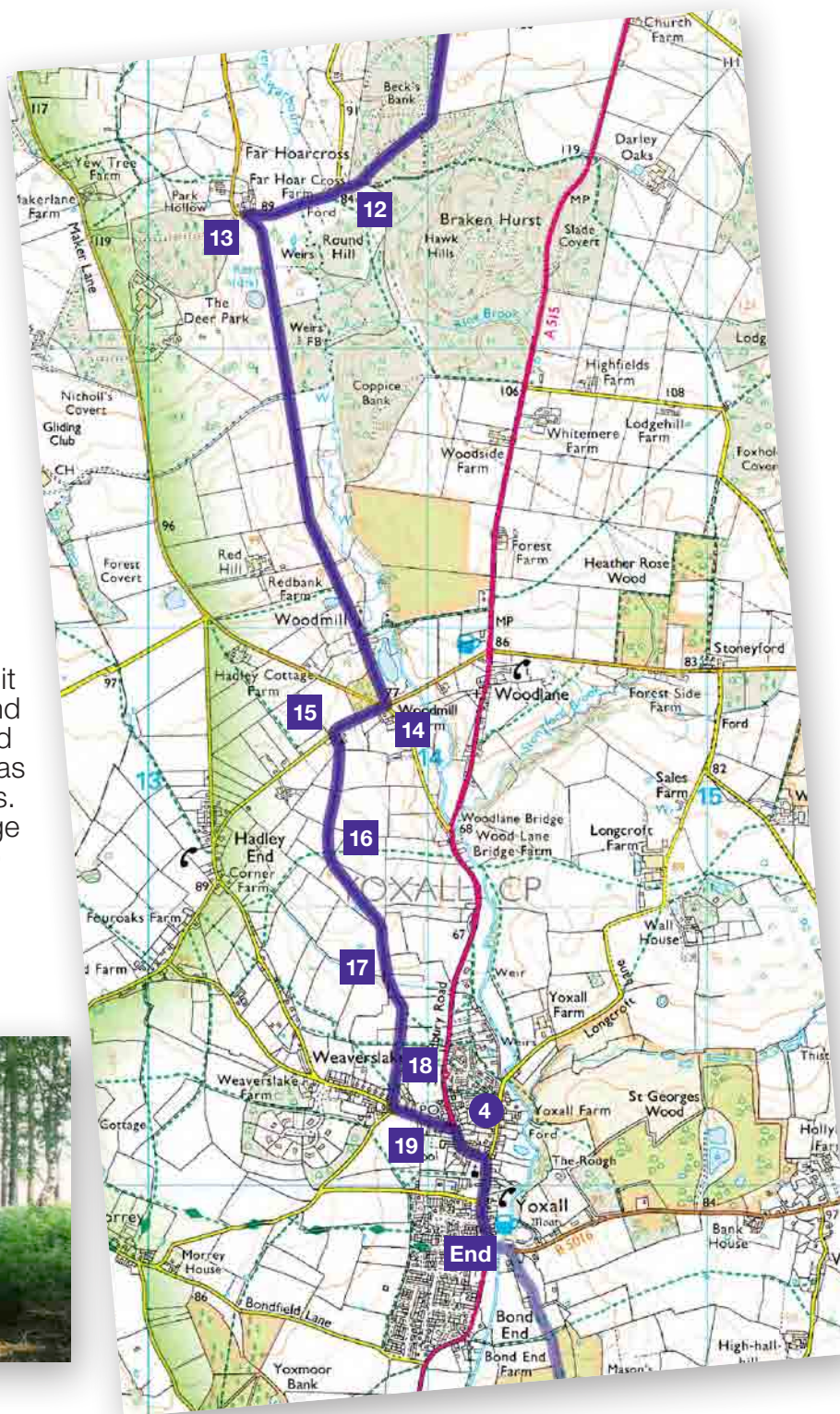
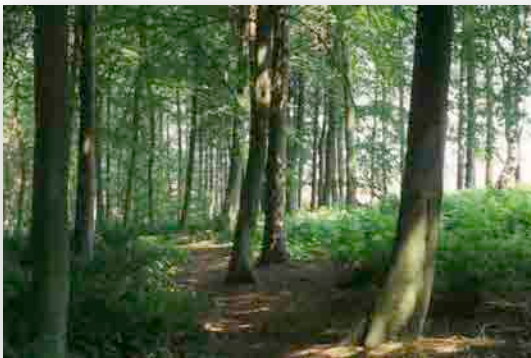


**12** Turn left to walk along the road, using the bridge to cross the ford when you reach it. After about 300m, you will reach a road junction.

**13** At the junction, next to Far Hoar Cross Farm, turn left. Using the road verge to avoid traffic, follow this road for about 1,800m, through a small hamlet called Woodmill, until you reach a junction of five roads.

**14** Take the second turning on your right, Dunstall Lane. Take care as there are no pavements here. Follow Dunstall Lane for 200m to a track on your left, next to Drumbeg Cottage.

**15** Turn left down the track and follow it until you reach a stile. Cross this and bear diagonally right across the field on a track. Keep going straight on as the track crosses another two fields. In the second field aim for the hedge on your left, where you will find two stiles.



**16** Take the stile on the right and then head diagonally right across the field. After the next stile, in the corner of this field, bear right to walk along the edge of the next field with the hedge on your right.

**17** Cross the stile into the next field, keeping to the right hand side again, but bear left at the bottom of the field to cross the next stile and a sleeper bridge. Head uphill through the next field and then across two more fields using the stiles.

**18** At the end of the last field, cross the stile and you will find yourself on the edge of the playing fields. Go straight on, walking along the edge until you reach an ornate gate by the houses. Carry on through the gate, between the houses, and on to the road.

**19** Turn left onto Hadley Street and follow it to its junction with the main road (the A515). Turn right onto King Street and follow it as it bears right by the church on Main Street and on to the bus stop next to the Crown Inn.

# Useful Information

## Parking

Parking is available at Rangemore, Yoxall and Jackson's Bank.

Please be aware of car park closing times before setting off.

## Public transport

Yoxall is on the 7/7A/7E Lichfield-Burton bus route (Mon-Sun).

There are no bus services to Rangemore, but the 7/7A/7E also serves Branston (the starting/finishing point of stage 10).

For detailed information on bus routes and times, call **Traveline** on 0871 200 22 33 (charges apply).

*Every effort has been made to ensure the accuracy of this information at the time of publication. However, the National Forest Company cannot be held responsible for any error, omission or subsequent changes.*

# How to use this leaflet

The maps in this leaflet are based upon the Ordnance Survey's 1:25,000 scale Explorer maps and are presented at the correct scale if printed on A4 paper.

- 1 Square symbols on the maps link with the route directions that are provided alongside the map.
- 1 Circular symbols represent key points of interest along the route of the trail.

# Points of interest along this stage

## 1 Rangemore

Rangemore is located within the ancient Needwood Forest. Rangemore Hall on the outskirts of the village has historical connections to Burton upon Trent's famous Bass brewing dynasty and has hosted royal visitors. Today the Hall has been converted into exclusive residential apartments.



## 2 Byrkely Park

Byrkely Park estate was originally part of Needwood, at a time when wolf, wild boar and fallow deer roamed the forest.

The magnificent grounds are now home to St. George's Park National Football Centre, opened by the Duke and Duchess of Cambridge in October 2012.



## 3 Jackson's Bank

This woodland is owned by the Duchy of Lancaster and is a valuable nature conservation site. Coniferous planting is being replaced by native broadleaf trees and the wood is home to bluebell, wood anemone, wild garlic and wood spurge.



## 4 Yoxall

Yoxall is an attractive Needwood village situated on the River Swarbourne. The main street features several timber framed buildings dating from the 14th century and a number of fine 18th century farmhouses in red brick.



# About The National Forest

The National Forest is one of Britain's boldest environmentally-led regeneration projects: the creation of a new forest across 200 square miles of parts of Derbyshire, Leicestershire and Staffordshire, linking the ancient forests of Needwood and Charnwood.

Over the last twenty years, The National Forest has trebled forest cover within its boundary, creating habitats for wildlife, a woodland economy and a beautiful landscape for everyone to enjoy.

