

The National Forest Way takes walkers on a 75-mile journey through a transforming landscape, from the National Memorial Arboretum in Staffordshire to Beacon Hill Country Park in Leicestershire.

On the way, you will discover the area's evolution from a rural landscape, through industrialisation and its decline, to the modern-day creation of a new forest, where 21st-century life is threaded through a mosaic of green spaces and settlements.

The trail leads through young and ancient woodlands, market towns and the industrial heritage of this changing landscape.



The National Forest Way was created by a partnership of the National Forest Company, Derbyshire County Council, Leicestershire County Council and Staffordshire County Council, with the generous support of Fisher German.



To find out more, visit:
www.nationalforestway.co.uk



Stage 7: Moira to Hartshorne

Length: 6¼ miles / 10 kilometres

About this stage

Start: Conkers Waterside, Moira (DE12 6BA)
End: Hartshorne Village Hall (DE11 7BE)

This stage takes you through pastoral countryside, lying cheek by jowl alongside the scars left by two centuries of coal and clay extraction. Here you will see the greatest transformation in The National Forest: tree planting has truly turned the land from black to green.

The National Forest Company

Bath Yard, Moira, Swadlincote,
Derbyshire DE12 6BA

Telephone: 01283 551211

Enquiries: www.nationalforestway.co.uk/contact

Website: www.nationalforest.org

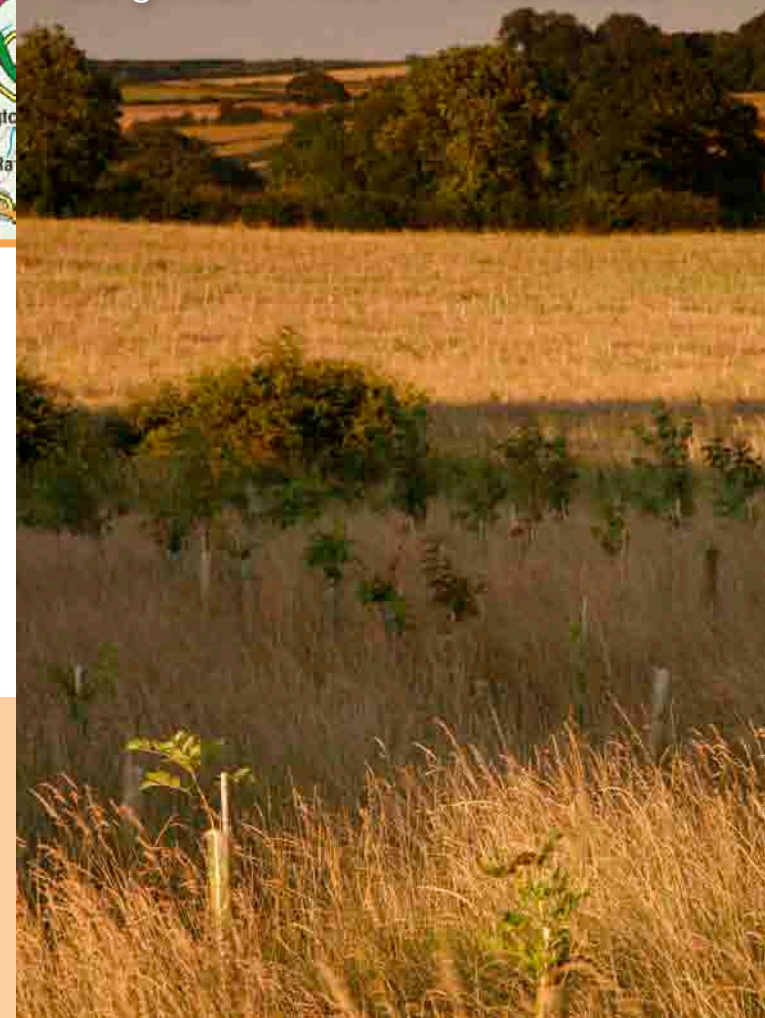
Photos: Jacqui Rock and NFC

Maps reproduced by permission of Ordnance Survey on behalf of HMSO. © Crown copyright and database right (2014). All rights reserved. Licence number 100021056.



THE NATIONAL FOREST

Route directions: Eastbound

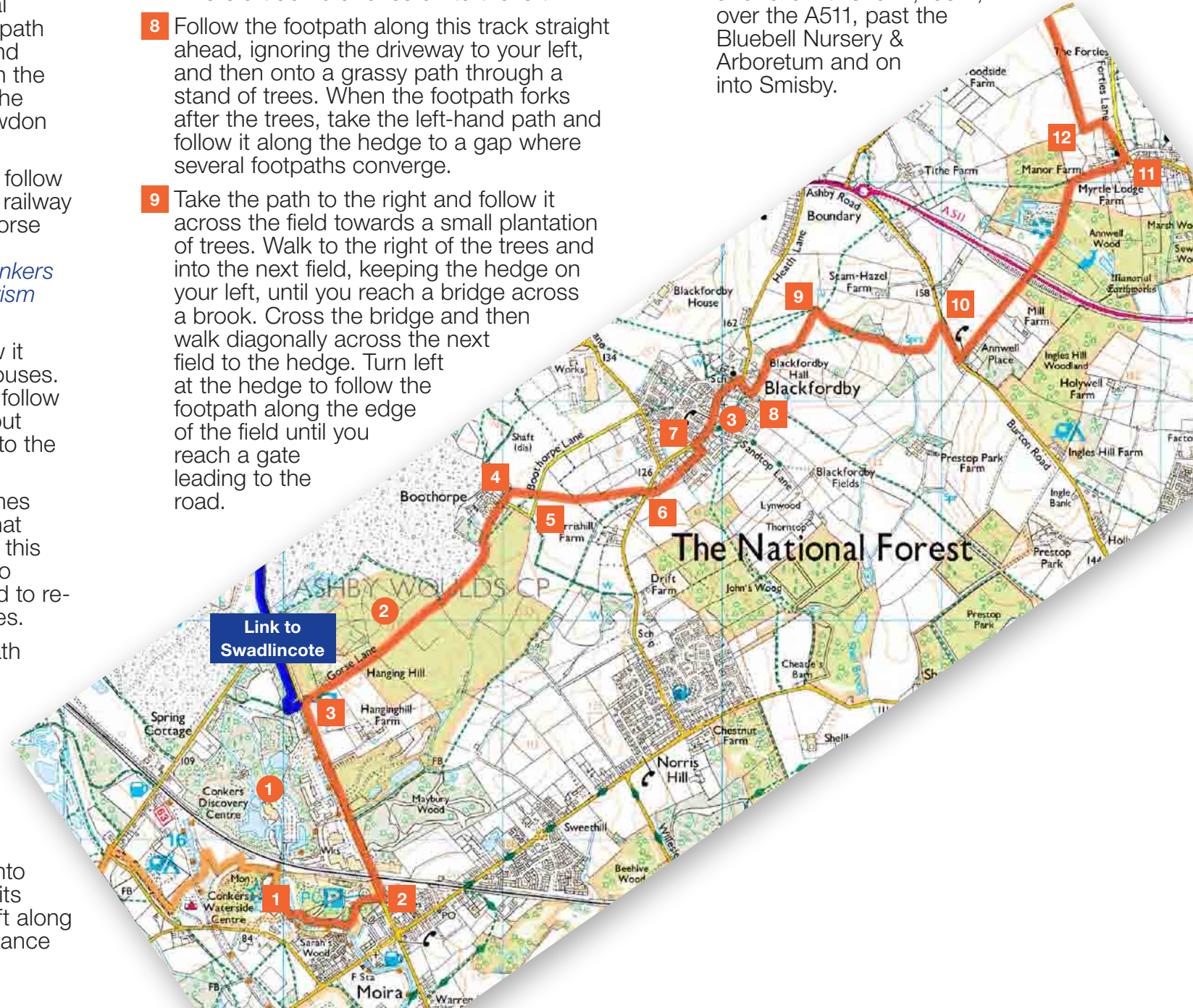


Moira to Hartshorne

- 1 From the car park of Conkers Waterside, take the bridge over the Ashby Canal and turn right to follow the surfaced path around the edge of Sarah's Wood and alongside the canal. When you reach the circular car park, turn right through the ornate metal gates and out onto Rawdon Road.
- 2 Cross Rawdon Road and turn left to follow the pavement for 1,000m, under the railway bridge and on to the junction with Gorse Lane.
Along the way, if you wish to visit Conkers Discovery, turn left at the brown tourism sign and follow the drive downhill.
- 3 Turn right into Gorse Lane and follow it uphill to the gate at the end of the houses. Go through the pedestrian gate and follow the bridleway along the track for about 1,000m, through an S-bend and on to the hamlet of Boothorpe.
- 4 Continue along the track as it becomes a surfaced road, ignoring the road that joins from the right. About 50m after this junction, take the stile on your right to follow a footpath across the next field to re-join the road via a series of three stiles.
- 5 Cross the road and follow the footpath across the field opposite. At the end of this field, go through the kissing gate and follow the path between two fences until you reach the outskirts of Blackfordby.
- 6 Cross the road to the stile opposite and on to walk between two fences through the next field. Follow the footpath between the houses, out onto Thorntop Close and up the slope to its junction with Sandtop Close. Turn left along Sandtop Close and walk a short distance to the T-junction with Main Street.

- 7 Turn right to follow Main Street for about 375m to the Black Lion pub, opposite the church. Turn right immediately after the pub onto Ashby Lane and walk for 75m to where a track branches off to the left.
- 8 Follow the footpath along this track straight ahead, ignoring the driveway to your left, and then onto a grassy path through a stand of trees. When the footpath forks after the trees, take the left-hand path and follow it along the hedge to a gap where several footpaths converge.
- 9 Take the path to the right and follow it across the field towards a small plantation of trees. Walk to the right of the trees and into the next field, keeping the hedge on your left, until you reach a bridge across a brook. Cross the bridge and then walk diagonally across the next field to the hedge. Turn left at the hedge to follow the footpath along the edge of the field until you reach a gate leading to the road.

- 10 Go through the gate and cross the road to the pavement. Turn right and walk to the Tap House pub. Immediately before the pub, turn left onto Annwell Lane and follow this for 1,250m, over the A511, past the Bluebell Nursery & Arboretum and on into Smisby.



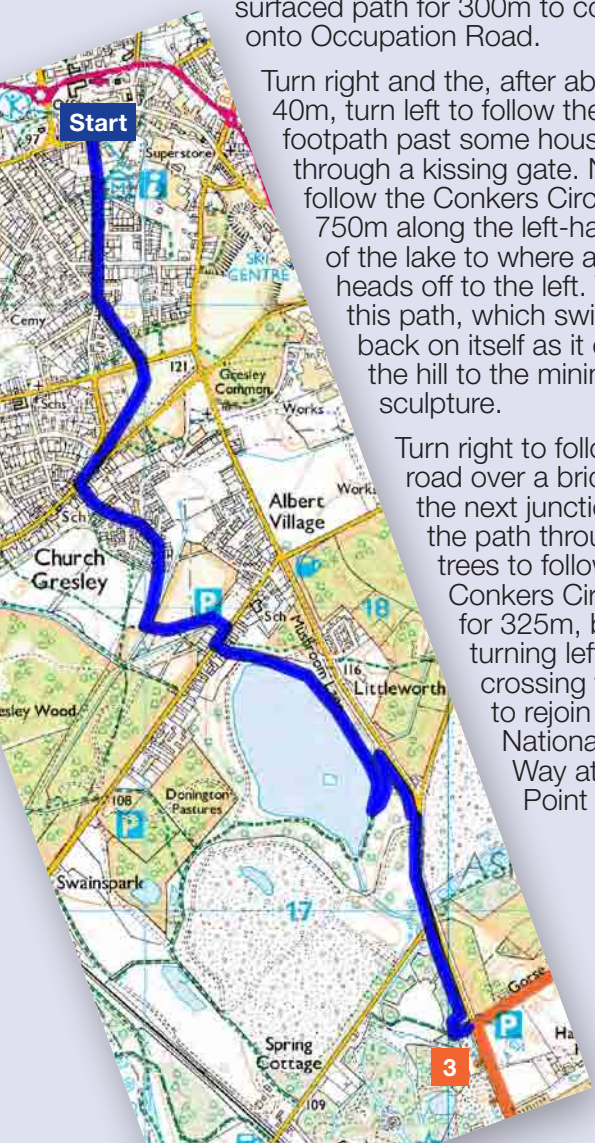
Link from Swadlincote

To reach the National Forest Way from the nearby town of Swadlincote, follow the 2¾ mile link below.

Starting at Sharpes Pottery, head uphill along Alexandra Road until you reach Maurice Lea Memorial Park. Head through the park and onto Common Road. Turn right and, after about 100m, left onto Thorpe Downs Road. Follow this to the bottom and continue onto the surfaced path. Follow this for about 150m to a T-junction marked by a boulder. Turn left and follow the surfaced path for 300m to come out onto Occupation Road.

Turn right and the, after about 40m, turn left to follow the footpath past some houses and through a kissing gate. Now follow the Conkers Circuit for 750m along the left-hand side of the lake to where a path heads off to the left. Take this path, which switches back on itself as it climbs the hill to the mining sculpture.

Turn right to follow the road over a bridge to the next junction. Take the path through the trees to follow the Conkers Circuit for 325m, before turning left and crossing the road to rejoin the National Forest Way at Point **3**.



Points of interest along this stage

1 Conkers

Conkers was one of the earliest visitor attractions to be developed in The National Forest. Built on a former deep coal mine, you can now explore 120 acres of woodland, enjoy adventure play and over 100 indoor interactive exhibits.



2 Feanedock Wood

From the top of Feanedock Wood you can enjoy a panoramic view over the transforming Forest landscape. The active landfill site will in time be restored to create new wildlife habitats and open access woodlands.



3 Blackfordby Spring

At the bottom of the hill in the village of Blackfordby look out for a natural spring dating back to the 11th century. Legend has it that the water has never frozen over.



4 Hartshorne

Hartshorne village is set amongst pleasant hilly farmland. The church of St Peter contains the family tomb of the Dethick family, one of whom went to Cleves to find a fourth wife for Henry VIII.



Useful Information

Parking

Parking is available in Hartshorne and at Conkers in Moira.

Please be aware of car park closing times before setting off.

Public transport

Hartshorne is on the 61 Derby–Melbourne–Swadlincote bus route (Mon–Sun).

Moira is on the 9A Coalville–Burton bus route (Mon–Sat).

Change at Swadlincote to travel between the start and finish of the stage.

For detailed information on bus routes and times, call **Traveline** on 0871 200 22 33 (charges apply).

How to use this leaflet

The maps in this leaflet are based upon the Ordnance Survey's 1:25,000 scale Explorer maps and are presented at the correct scale if printed on A4 paper.

- 1 Square symbols on the maps link with the route directions that are provided alongside the map.
- 1 Circular symbols represent key points of interest along the route of the trail.

To find out more, visit:

www.nationalforestway.co.uk

Every effort has been made to ensure the accuracy of this information at the time of publication. However, the National Forest Company cannot be held responsible for any error, omission or subsequent changes.